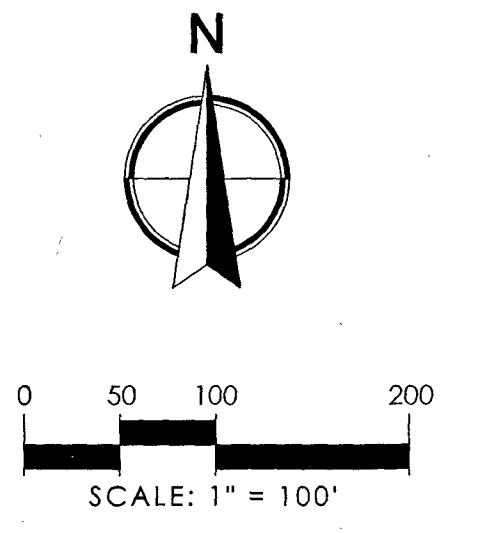
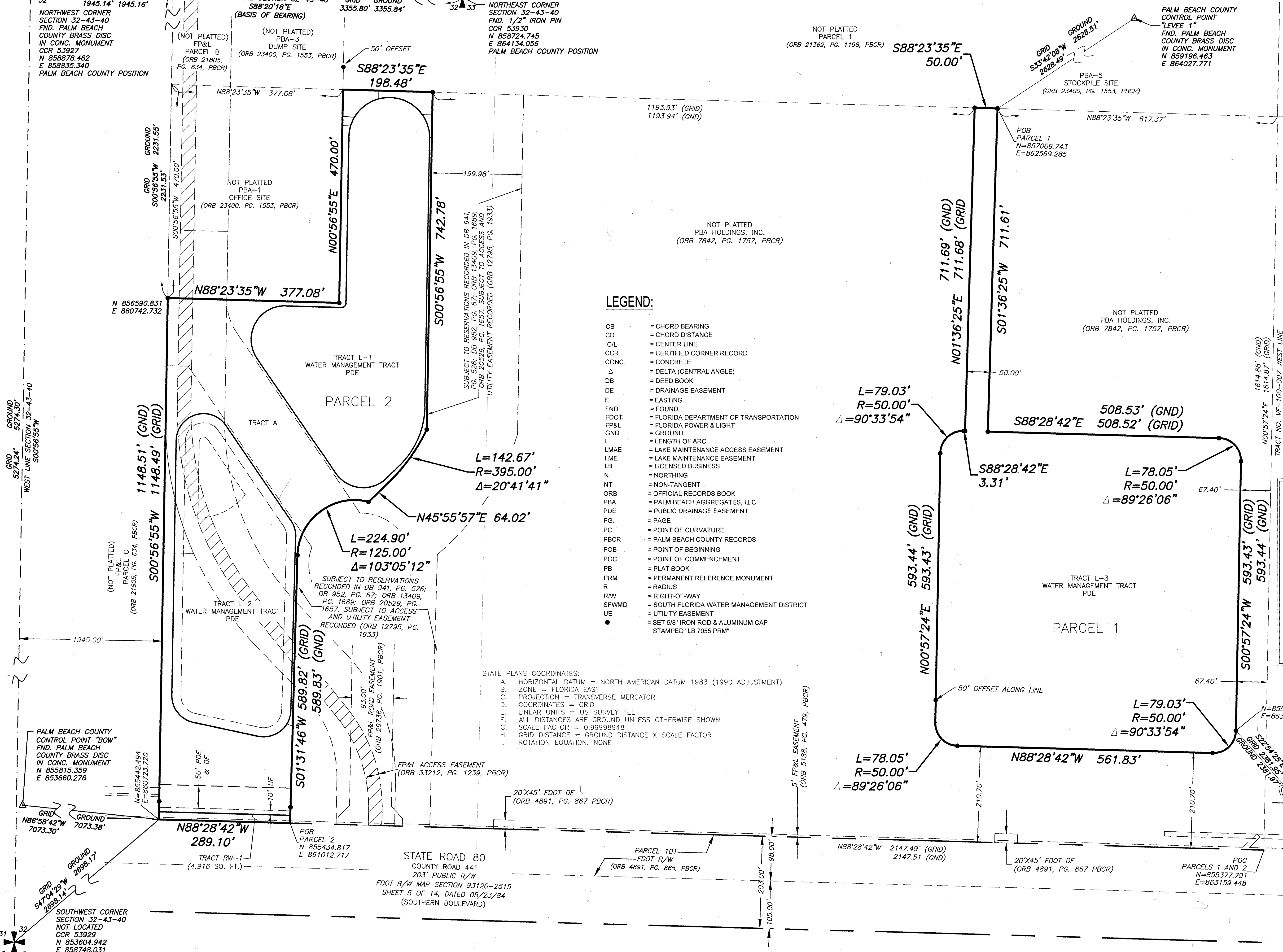


PBA HYDRO STORAGE WATER CONSERVATION & ENERGY CENTER

BEING A PORTION OF SECTIONS 32, TOWNSHIP 43S, RANGE 40E
PALM BEACH COUNTY, FLORIDA

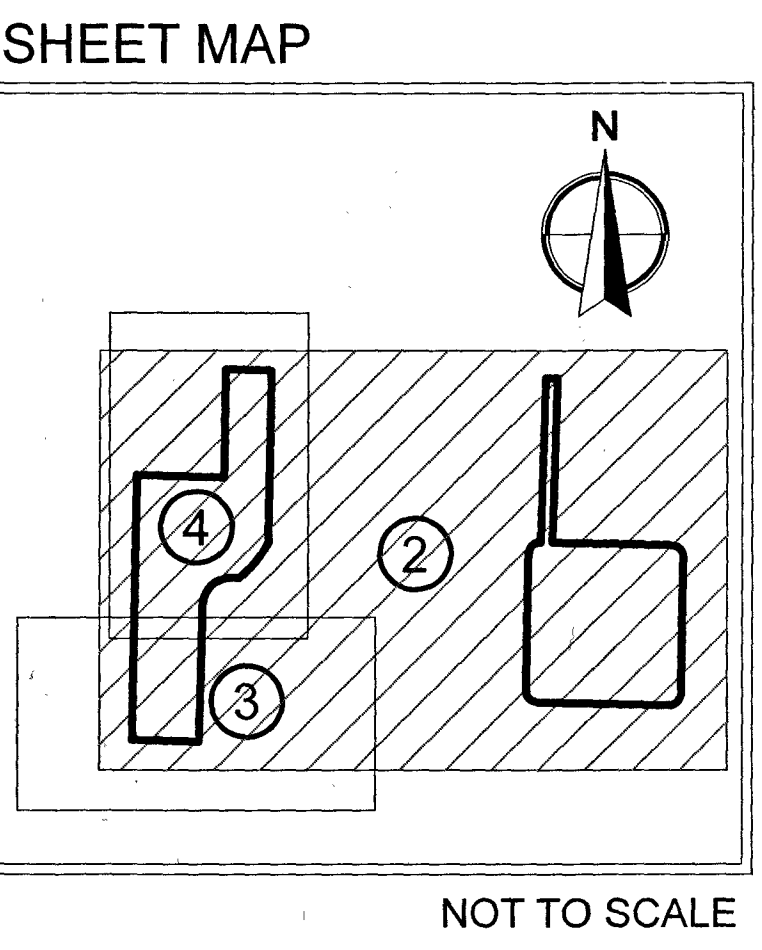
110



- LEGEND:**
- CB = CHORD BEARING
 - CD = CHORD DISTANCE
 - CIL = CENTER LINE
 - CCR = CERTIFIED CORNER RECORD
 - CONC. = CONCRETE
 - Δ = DELTA (CENTRAL ANGLE)
 - DB = DEED BOOK
 - DE = DRAINAGE EASEMENT
 - E = EASTING
 - FND. = FOUND
 - FDOT = FLORIDA DEPARTMENT OF TRANSPORTATION
 - FP&L = FLORIDA POWER & LIGHT
 - GND = GROUND
 - L = LENGTH OF ARC
 - LMAE = LAKE MAINTENANCE ACCESS EASEMENT
 - LME = LAKE MAINTENANCE EASEMENT
 - LB = LICENSED BUSINESS
 - N = NORTHING
 - NT = NON-TANGENT
 - ORB = OFFICIAL RECORDS BOOK
 - PBA = PALM BEACH AGGREGATES, LLC
 - PDE = PUBLIC DRAINAGE EASEMENT
 - PG. = PAGE
 - PC = POINT OF CURVATURE
 - PBCR = PALM BEACH COUNTY RECORDS
 - POB = POINT OF BEGINNING
 - POC = POINT OF COMMENCEMENT
 - PB = PLAT BOOK
 - PRM = PERMANENT REFERENCE MONUMENT
 - R = RADIUS
 - R/W = RIGHT-OF-WAY
 - SFWM = SOUTH FLORIDA WATER MANAGEMENT DISTRICT
 - UE = UTILITY EASEMENT
 - = SET 5/8" IRON ROD & ALUMINUM CAP STAMPED "LB 7055 PRM"

STATE PLANE COORDINATES:

- A. HORIZONTAL DATUM = NORTH AMERICAN DATUM 1983 (1990 ADJUSTMENT)
- B. ZONE = FLORIDA EAST
- C. PROJECTION = TRANSVERSE MERCATOR
- D. COORDINATES = GRID
- E. LINEAR UNITS = US SURVEY FEET
- F. ALL DISTANCES ARE GROUND UNLESS OTHERWISE SHOWN
- G. SCALE FACTOR = 0.99998948
- H. GRID DISTANCE = GROUND DISTANCE X SCALE FACTOR
- I. ROTATION EQUATION: NONE



SHEET 2 OF 4

THIS INSTRUMENT WAS PREPARED BY JIM SULLIVAN



2035 Vista Parkway, West Palm Beach, FL 33411
 Phone No. 866.909.2220 www.wginc.com
 Cert No. 6091 - LB No. 7055